

endeavour. Examples will be representing the school in a range of sporting, musical and art activities.

**Leavers' Awards – Yr 6 only.** These awards are made in recognition of the personal qualities of individual children and for the way in which they have used them to contribute meaningfully to the life and work of the school.

### **Managing unacceptable behaviours**

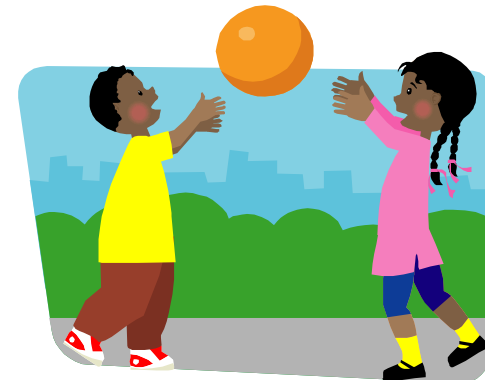
A staged approach to managing unacceptable behaviour has been devised for use in both the classroom and at lunchtimes. This starts with an explanation of the unacceptable behaviour and a verbal warning. It can then move on to loss of privileges eg. class reward time. In cases of persistent misbehaviour, parents will be invited to discuss the details with the class teacher concerned and/or a senior member of staff to find a way forward.

In the most extreme cases of unacceptable behaviours, a period of exclusion from school may be considered appropriate.

The school's Behaviour and Discipline Policy provides a supportive framework for both staff and children in the setting and achieving of positive behaviours. In this way, it permeates all aspects of school life and contributes strongly to the ethos of the school. Consequently, standards of behaviour in the school are very high - a fact endorsed by Ofsted Inspectors in 2008 who found the behaviour of children in the school to be 'exemplary'!

A full copy of the school's Behaviour and Discipline Policy is available from the School Office.

## Maynards Green Community Primary School



## Promoting good behaviour

- a parental guide to the  
school's Behaviour Policy

## General principles

The staff and governors at Maynards Green Community Primary School are committed to the development and maintenance of a school environment in which all children have the opportunity to achieve the very highest standards. In addition to an appropriately planned and differentiated curriculum, we believe that a calm and well-ordered school, in which children feel safe and secure, behave appropriately and show respect and consideration for others, will provide the right atmosphere for achieving such high standards.

### We believe:-

- children need to feel safe and secure
- children respond well when they are valued and listened to
- children need to be in an environment in which they meet caring and concerned adults who will set firm boundaries whilst providing positive support for their appropriate behaviours
- children respond well to praise and positive reward
- all children and adults need to have a sense of “ownership” of the school’s expectations and guidelines for behaviour and discipline
- children respond well to consistency, both in the mutually-agreed guidelines for behaviour and their implementation.

## Rewarding positive behaviour and achievements

We believe that to manage children positively - by praising them, offering encouragement and acknowledging their achievements - is the best and most successful approach to creating a positive ethos. The ways in which children are encouraged, praised and rewarded are outlined below:-



**Merit Points.** Children can earn merit points from class teachers and teaching assistants for all sorts of things – good work, positive attitudes, good answers, good effort, progress, good behaviours etc. Merit points can also be earned at

lunchtime play. When 100 Merit points have been earned, children will be awarded a Merit Badge and Merit Certificate.

**Exemplary Behaviour Certificate.** These certificates are for exceptionally good behaviour maintained over a period of time which will include:-

- consistently good attitudes to work
- consistently keeping to the school rules
- consistently making best efforts



**Headteacher Awards.** These are awarded at the discretion of the Headteacher in recognition of excellent work and/or effort in all areas of schooling.

**Gold Award.** These are awarded in specific recognition of:-

- an outstanding piece of work
- marked progress in an area of learning
- major effort in relation to a piece of work
- a specific piece of outstanding behaviour

‘**Stickers**’ of various designs can be awarded by all staff for work, motivation, smart dress, special occasions etc.

**Monthly Dining Hall Behaviour Prize Draw ‘tickets’.** These are awarded for acceptable dining hall behaviours such as:-

- good manners at the dining table
- good display of social/communication skills
- sitting quietly when required to do so.

Small prizes are awarded to the winning ticket holders at the monthly prize draw.

‘**Choosing**’ and ‘**tasks of responsibility**’. Allowing a child to choose an activity or offering a responsible task (eg) register monitor, can be a successful way of rewarding positive behaviour.

**Recognition of contributions to the school.** Certificates will be awarded at a special assembly to children who have contributed something to the school in the form of personal